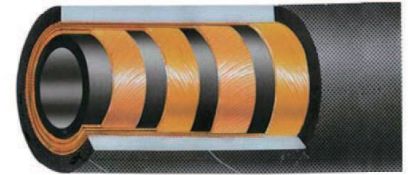









HEAVY DUTY CONCRETE PUMPING HOSE

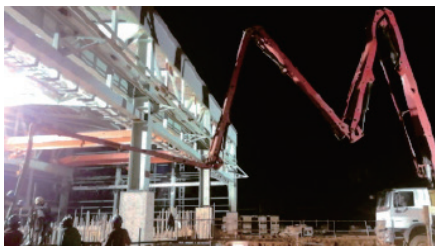
HS05

Two Or Four Steel Wire Spiral Cord




- TUBE : ABRASION RESISTANT SYNTHETIC RUBBER.
- REINFORCEMENT : TWO OR FOUR LAYERS OF STEEL WIRE SPIRAL CORD.
- COVER : OIL, ABRASION AND WEATHER RESISTANT SPECIAL SYNTHETIC RUBBER.
- APPLICATION : FOR CONSTRUCTION MACHINERY LIKE PUMP TRUCK TO DELIVERY CONCRETES.
- TEMPERATURE RANGE : 20°C~+82°C / 68°F ~ 179.6°F
- NOTE : SUITABLE FOR pH 5-8

TYPE	SIZE		 ID (mm)		 OD (mm)		 WP		 BP		 BR/r	 W	 L
	Dash Size	inch	min	max	min	max	bar	psi	bar	psi	mm	g/m	max/m
HS05-5102	-32	2"	50.5	51.5	69.5	70.5	85	1233	255	3698	508	314	20/40
HS05-6402	-40	2-1/2"	63.5	64.5	79.5	88.5	85	1233	255	3698	635	530	20/40
HS05-7604	-48	3"	75.5	77.5	102.5	105.5	85	1233	255	3698	760	670	20/40
HS05-8904	-56	3-1/2"	88	91	116	120	85	1233	255	3698	900	890	20/40
HS05-10204	-64	4"	101	104	127.5	132.5	85	1233	255	3698	1000	990	20/40
HS05-12704	-80	5"	126	129	150	156	40	580	120	1740	1250	10620	20/40



MARKING / TRANSFER TAPE OR INK JET

 CONCRETE HOSE(***)(DN**mm) W.P.**BAR/**PSI *Q/****(YEAR)

NORMS		COLOUR	 BLACK
-------	--	--------	--